

## Epson C4000 Printer Network Setup

Click on the Epson Device Admin (EDA) Icon on your desktop – If you can't locate it, click on the "Windows" key on your keyboard and search for "Epson Device Admin"



If not already installed: Download the "Epson Device Admin" from our support page <https://hartfordrents.com/support/>

Run the installation, follow the prompts, accept all defaults and install.

### Wired installation: (Network)

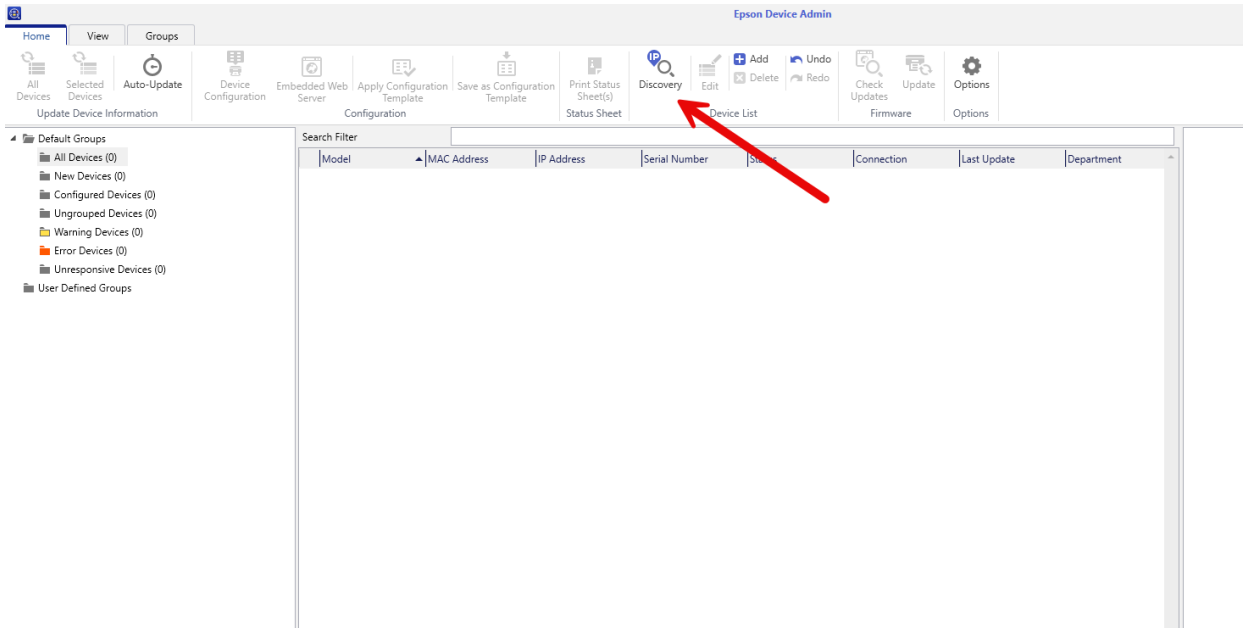
- Prior to beginning configuration, confirm your printer is hardwired /connected to the same network your laptop is connected to.

CHICAGO | LOS ANGELES | NEW YORK | WASHINGTON DC

**CLICK TO DOWNLOAD OUR CATALOG TODAY**



Launch the Epson Device Admin tool and click on “discovery”



This will begin the discovery phase (bottom right-hand corner)

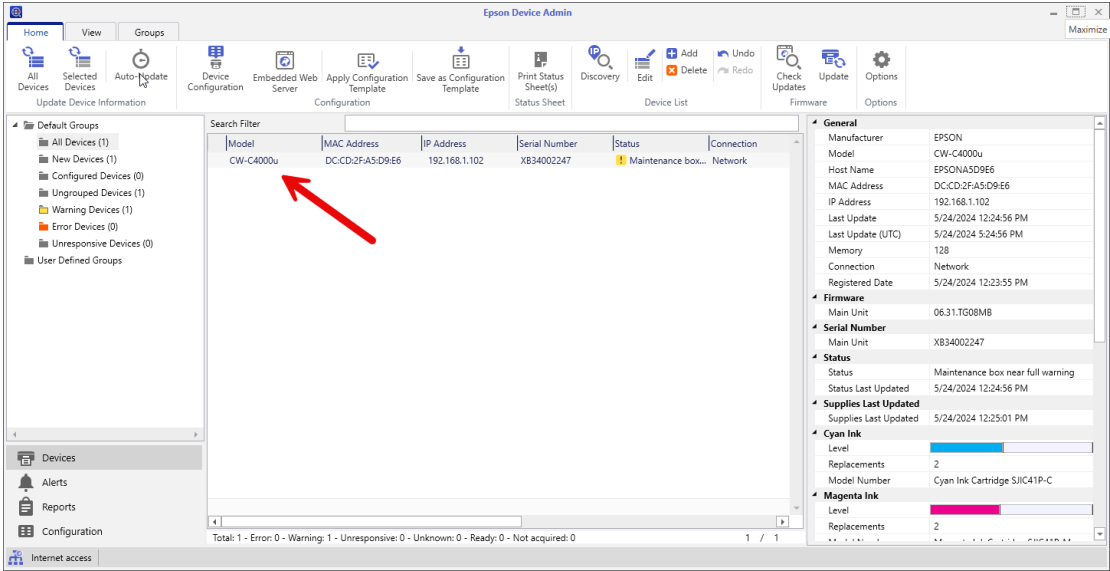


CHICAGO | LOS ANGELES | NEW YORK | WASHINGTON DC

**CLICK TO DOWNLOAD OUR CATALOG TODAY**



Your printer will now appear in the window



Please note the IP address that was assigned to your printer

CHICAGO | LOS ANGELES | NEW YORK | WASHINGTON DC

**CLICK TO DOWNLOAD OUR CATALOG TODAY**

# Hartford

TECHNOLOGY RENTAL  
not just equipment

[www.hartfordrents.com](http://www.hartfordrents.com)

Example: 192.168.1.102

The screenshot displays the Epson Device Admin application window. The interface includes a top menu bar with 'Home', 'View', and 'Groups'. Below this is a toolbar with various icons for device management. The main area is divided into a left-hand navigation pane, a central table, and a right-hand details pane.

**Left-hand navigation pane:**

- Default Groups
  - All Devices (1)
  - New Devices (1)
  - Configured Devices (0)
  - Ungrouped Devices (1)
  - Warning Devices (1)
  - Error Devices (0)
  - Unresponsive Devices (0)
  - User Defined Groups
- Devices
- Alerts
- Reports
- Configuration

**Central Table:**

Model	MAC Address	IP Address	Serial Number	Status	Connection
CW-C4000u	DC:CD:2F:A5:D9:E6	192.168.1.102	XB34002247	Maintenance box...	Network

A red arrow points to the IP address '192.168.1.102' in the table.

**Right-hand details pane:**

- General**
  - Manufacturer: EPSON
  - Model: CW-C4000u
  - Host Name: EPSONA5D9E6
  - MAC Address: DC:CD:2F:A5:D9:E6
  - IP Address: 192.168.1.102
  - Last Update: 5/24/2024 12:24:56 PM
  - Last Update (UTC): 5/24/2024 5:24:56 PM
  - Memory: 128
  - Connection: Network
  - Registered Date: 5/24/2024 12:23:55 PM
- Firmware**
  - Main Unit: 06.31.TG08M8
- Serial Number**
  - Main Unit: XB34002247
- Status**
  - Status: Maintenance box near full warning
  - Status Last Updated: 5/24/2024 12:24:56 PM
- Supplies Last Updated**
  - Supplies Last Updated: 5/24/2024 12:25:01 PM
- Cyan Ink**
  - Level: [Progress bar]
  - Replacements: 2
  - Model Number: Cyan Ink Cartridge SJC41P-C
- Magenta Ink**
  - Level: [Progress bar]
  - Replacements: 2

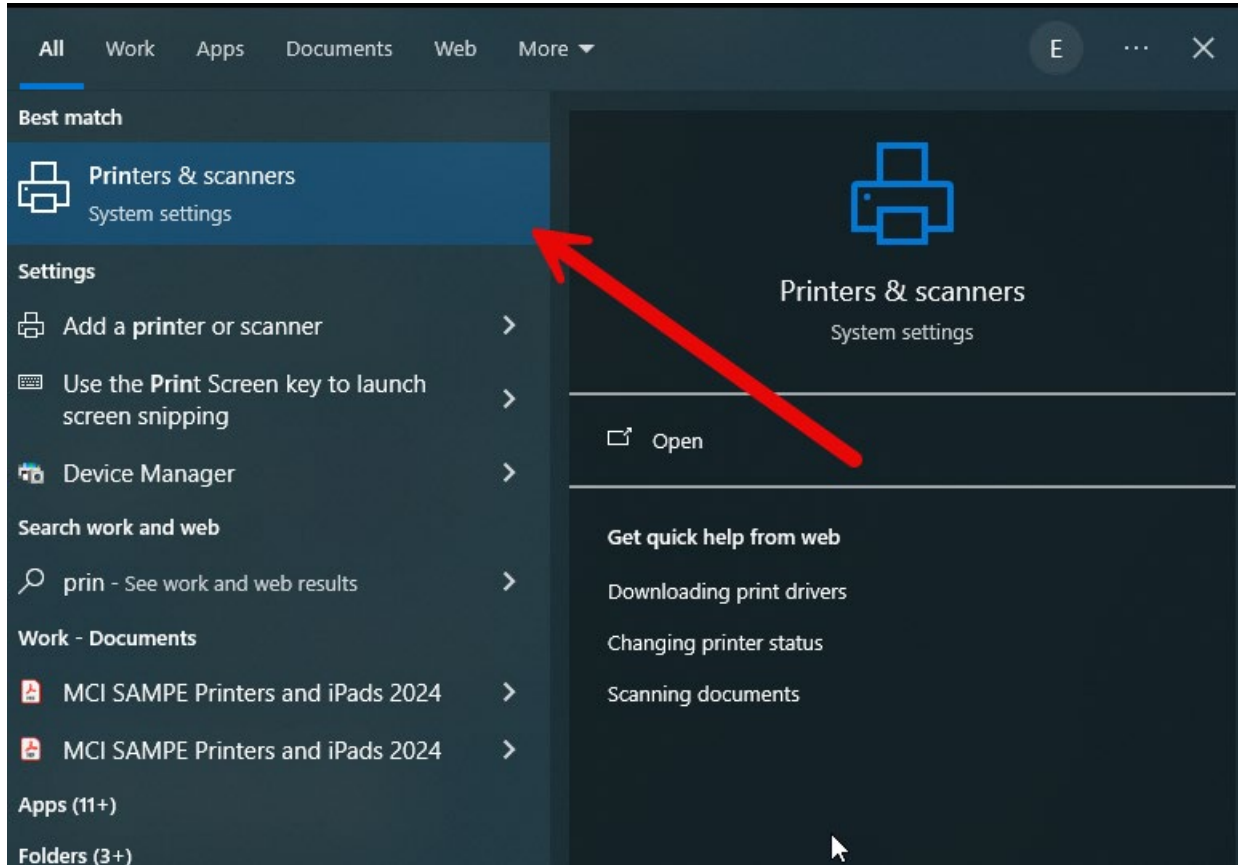
**Bottom status bar:** Total: 1 - Error: 0 - Warning: 1 - Unresponsive: 0 - Unknown: 0 - Ready: 0 - Not acquired: 0

CHICAGO | LOS ANGELES | NEW YORK | WASHINGTON DC

**CLICK TO DOWNLOAD OUR CATALOG TODAY**



Navigate to the Windows "Printer & scanners" System settings. You can search by clicking on the "Windows" key on your keyboard and typing in "printers" and launch.

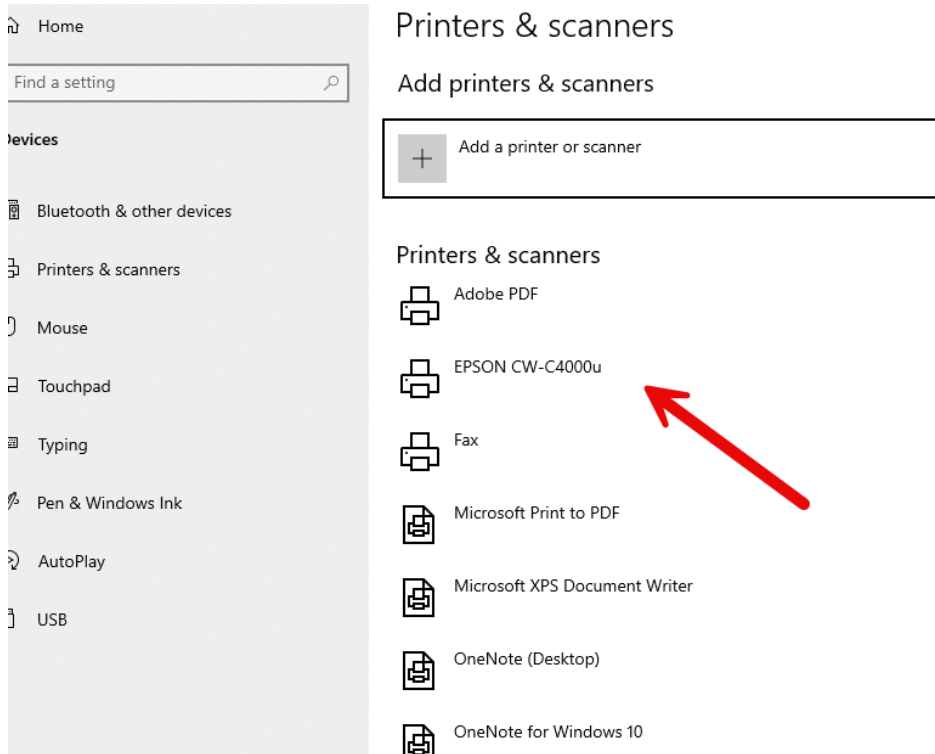


CHICAGO | LOS ANGELES | NEW YORK | WASHINGTON DC

**CLICK TO DOWNLOAD OUR CATALOG TODAY**



Your printer should now be installed and you can skip the next step

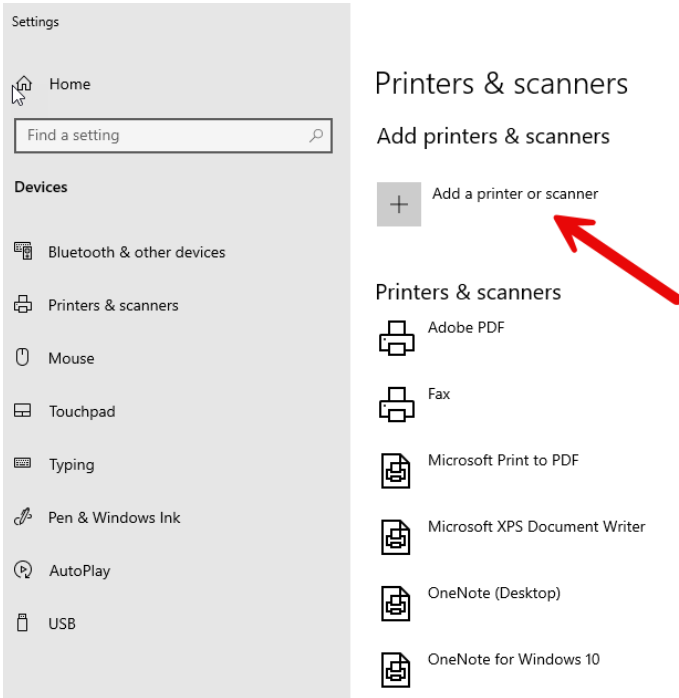


CHICAGO | LOS ANGELES | NEW YORK | WASHINGTON DC

**CLICK TO DOWNLOAD OUR CATALOG TODAY**



If your printer is not listed. Click on "Add a printer or scanner"

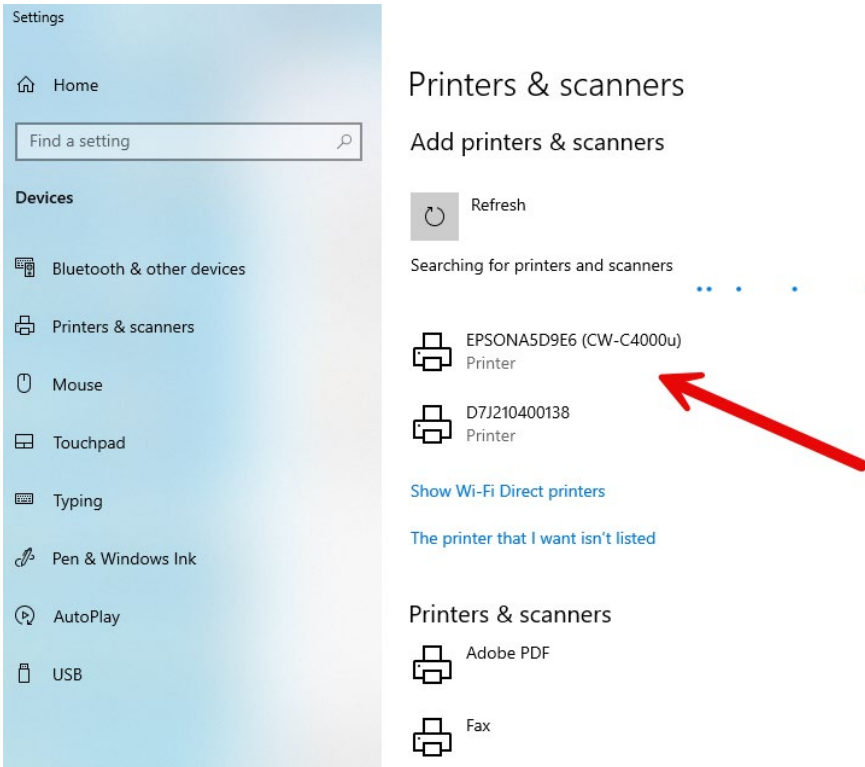


CHICAGO | LOS ANGELES | NEW YORK | WASHINGTON DC

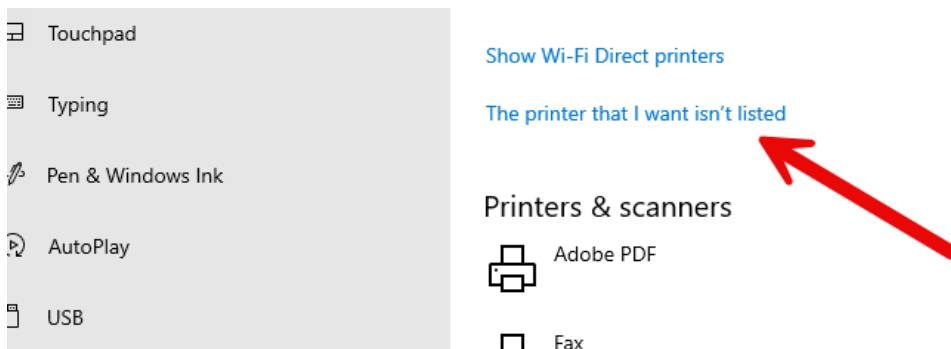
**CLICK TO DOWNLOAD OUR CATALOG TODAY**



This should refresh the page and your printer should appear



If your printer still doesn't appear click on "The printer that I want isn't listed"



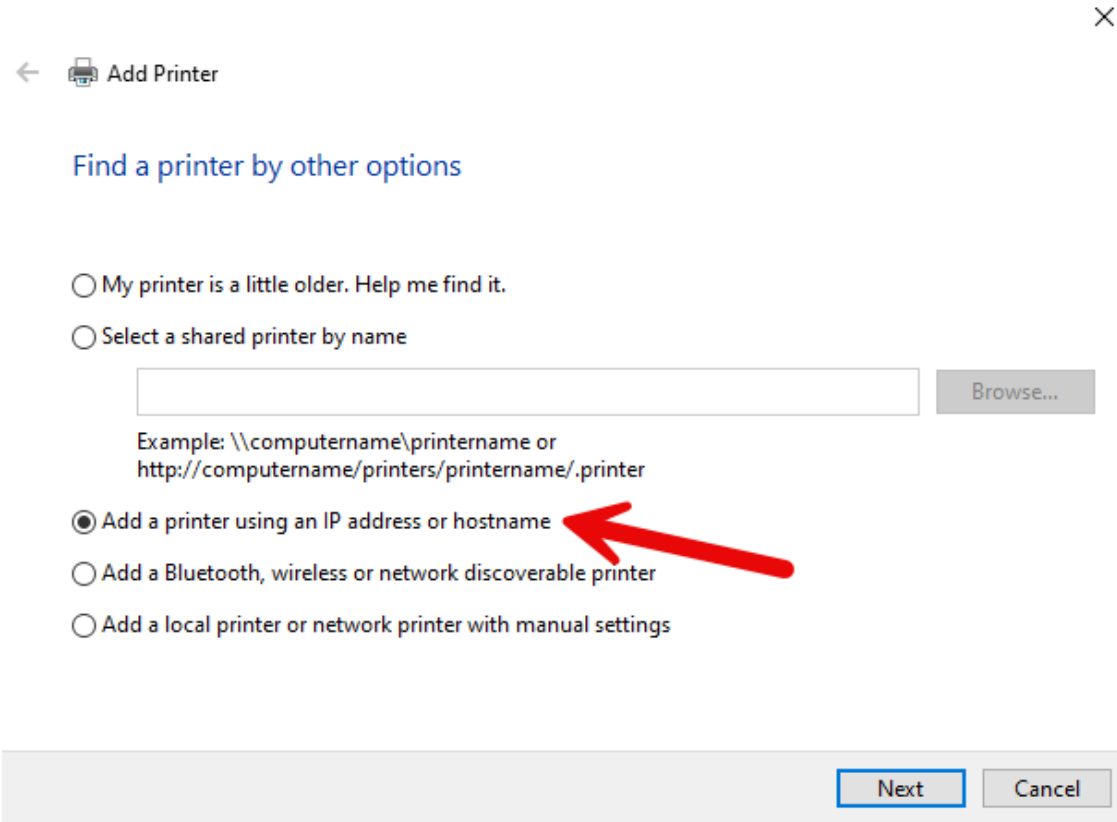
CHICAGO | LOS ANGELES | NEW YORK | WASHINGTON DC

**CLICK TO DOWNLOAD OUR CATALOG TODAY**





Select the "Add a printer using an IP address or hostname"

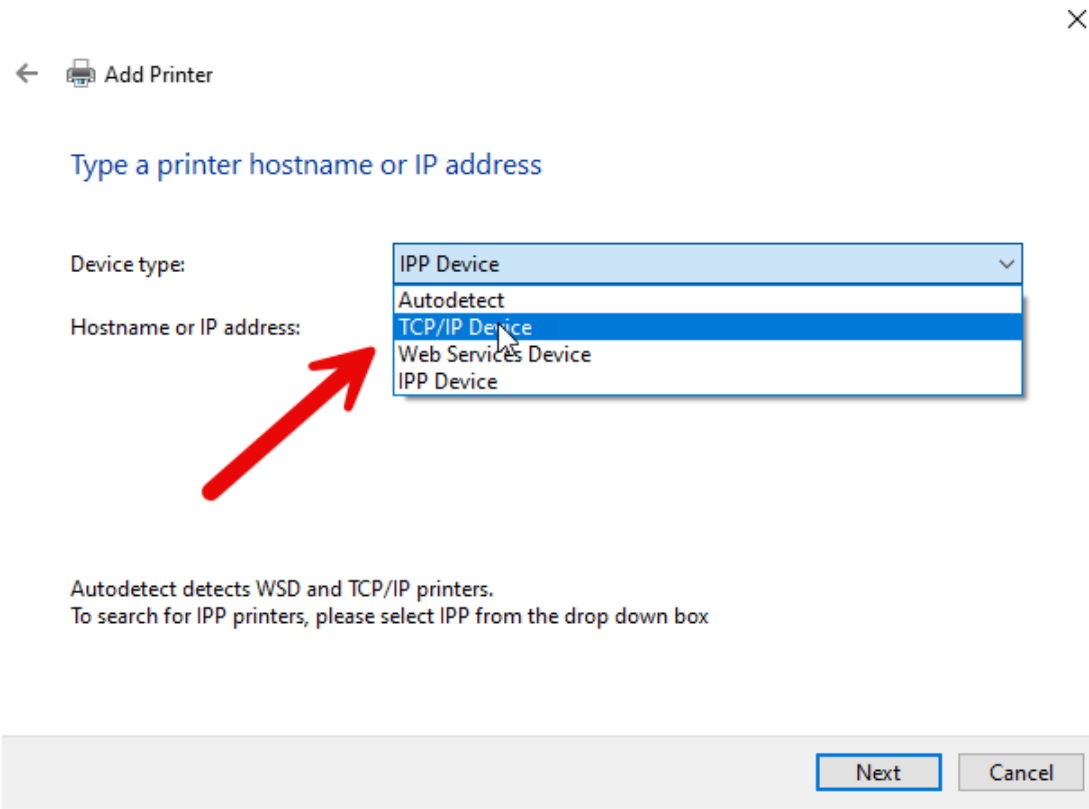


CHICAGO | LOS ANGELES | NEW YORK | WASHINGTON DC

**CLICK TO DOWNLOAD OUR CATALOG TODAY**



In the drop down select TCP/IP Device



CHICAGO | LOS ANGELES | NEW YORK | WASHINGTON DC

**CLICK TO DOWNLOAD OUR CATALOG TODAY**



Type in the IP address you noted on the previous step

Example IP address:

← Add Printer ×

Type a printer hostname or IP address

Device type: TCP/IP Device

Hostname or IP address: 192.168.1.102

Port name: 192.168.1.102

Query the printer and automatically select the driver to use

Autodetect detects WSD and TCP/IP printers.  
To search for IPP printers, please select IPP from the drop down box

Next Cancel

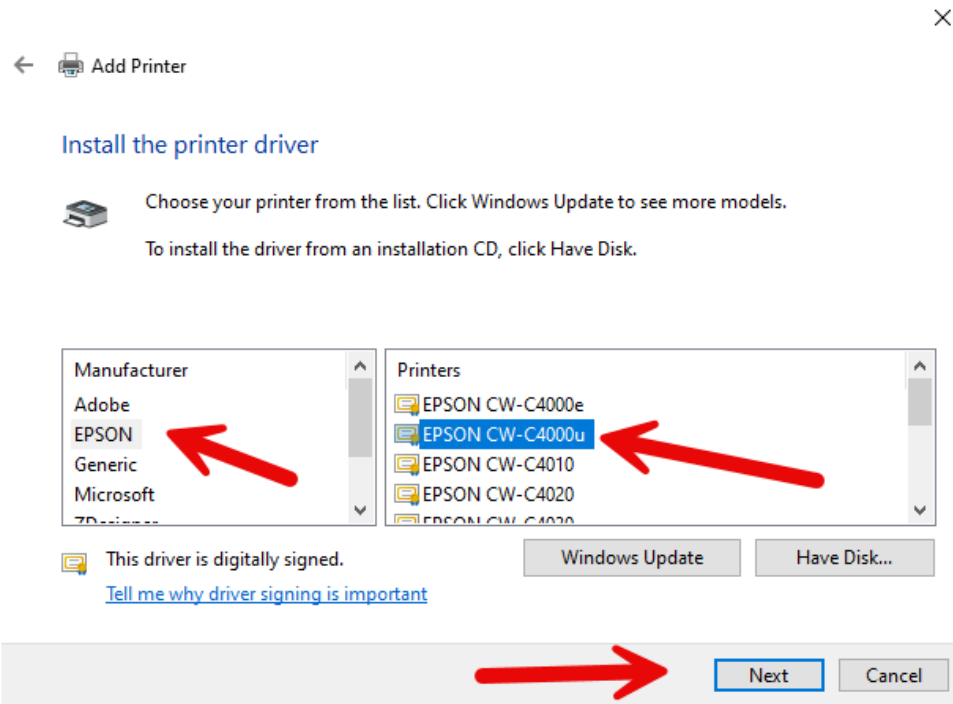
CHICAGO | LOS ANGELES | NEW YORK | WASHINGTON DC

**CLICK TO DOWNLOAD OUR CATALOG TODAY**



Navigate to the **EPSON CW-C4000u** driver and click "Next"

*This is the US version of the printer whereas the C4000e is the European version.*

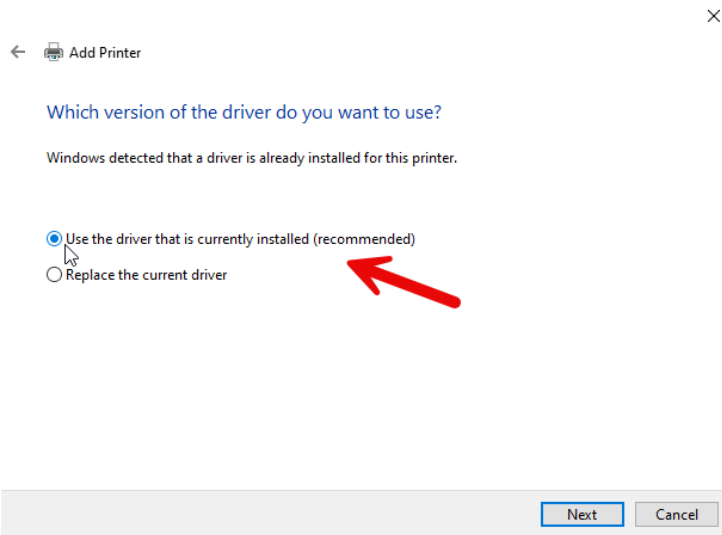


CHICAGO | LOS ANGELES | NEW YORK | WASHINGTON DC

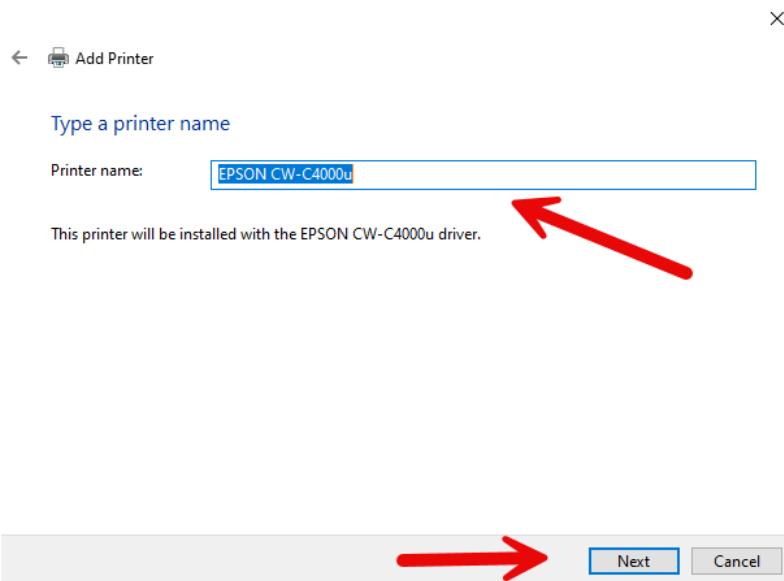
**CLICK TO DOWNLOAD OUR CATALOG TODAY**



If prompted select "Use the driver that is currently installed"



You can rename the printer or leave it as the default then click "Next"



CHICAGO | LOS ANGELES | NEW YORK | WASHINGTON DC

**CLICK TO DOWNLOAD OUR CATALOG TODAY**




For the purpose of this document, we are going to choose not to share this printer

Note: This printer Will be available to other devices connected to the same network as the printer such as iPads, other laptops, etc.

← Add Printer ×

### Printer Sharing

If you want to share this printer, you must provide a share name. You can use the suggested name or type a new one. The share name will be visible to other network users.

Do not share this printer 

Share this printer so that others on your network can find and use it

Share name:

Location:

Comment:

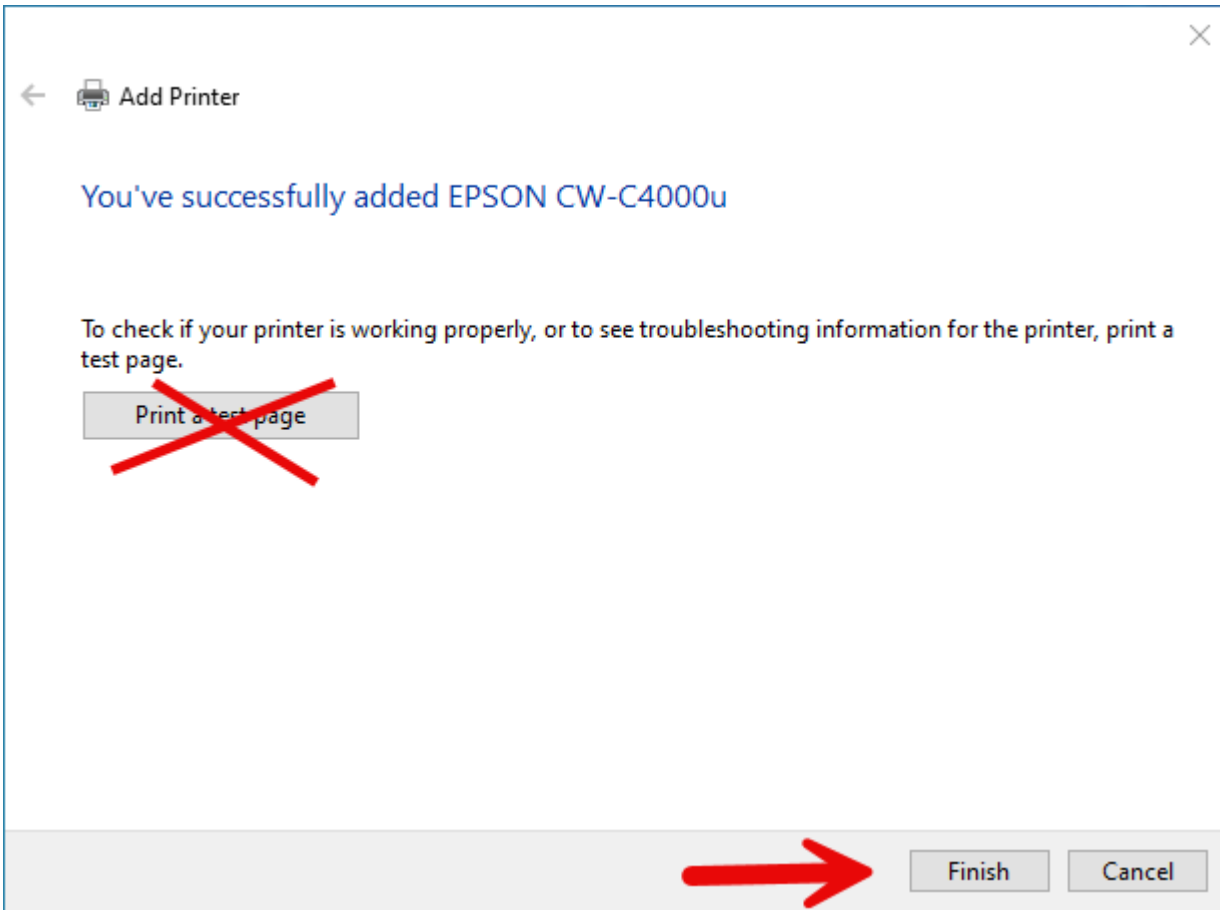
Next Cancel

CHICAGO | LOS ANGELES | NEW YORK | WASHINGTON DC

**CLICK TO DOWNLOAD OUR CATALOG TODAY**



Click on "Finish" **Do not print a test page**

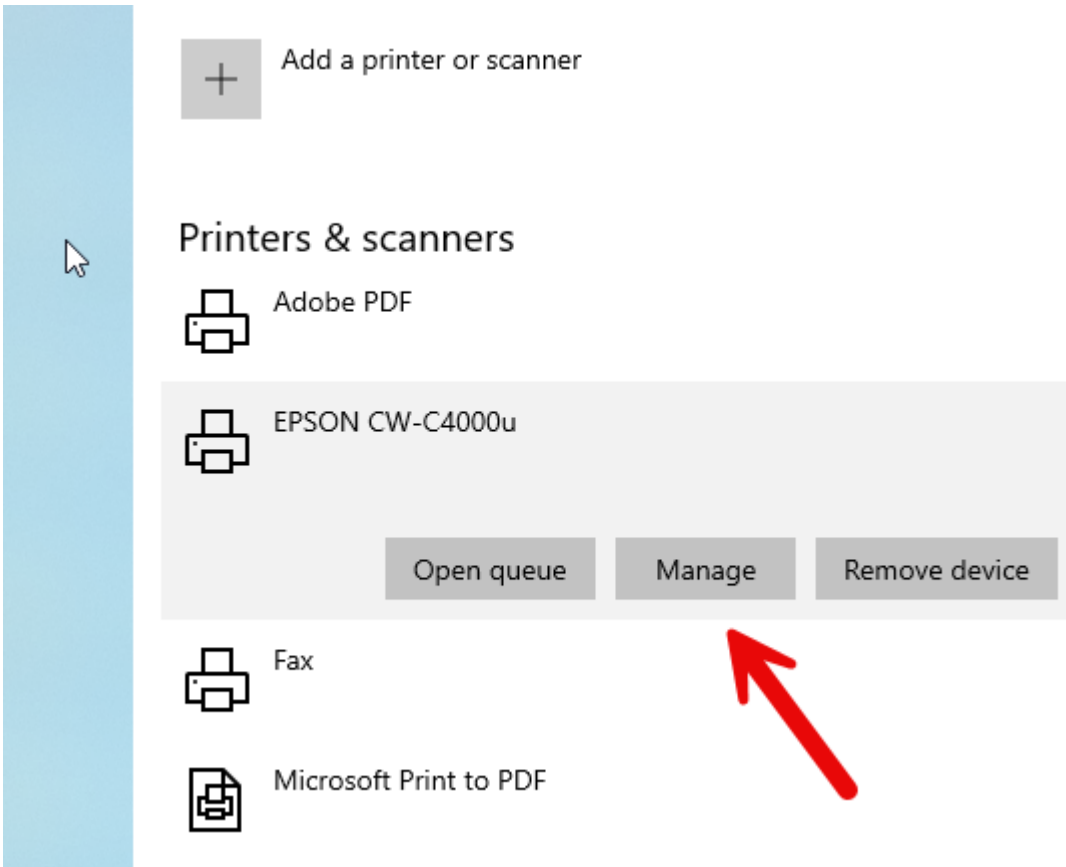


CHICAGO | LOS ANGELES | NEW YORK | WASHINGTON DC

**CLICK TO DOWNLOAD OUR CATALOG TODAY**



Click on the printer and click on "Manage"



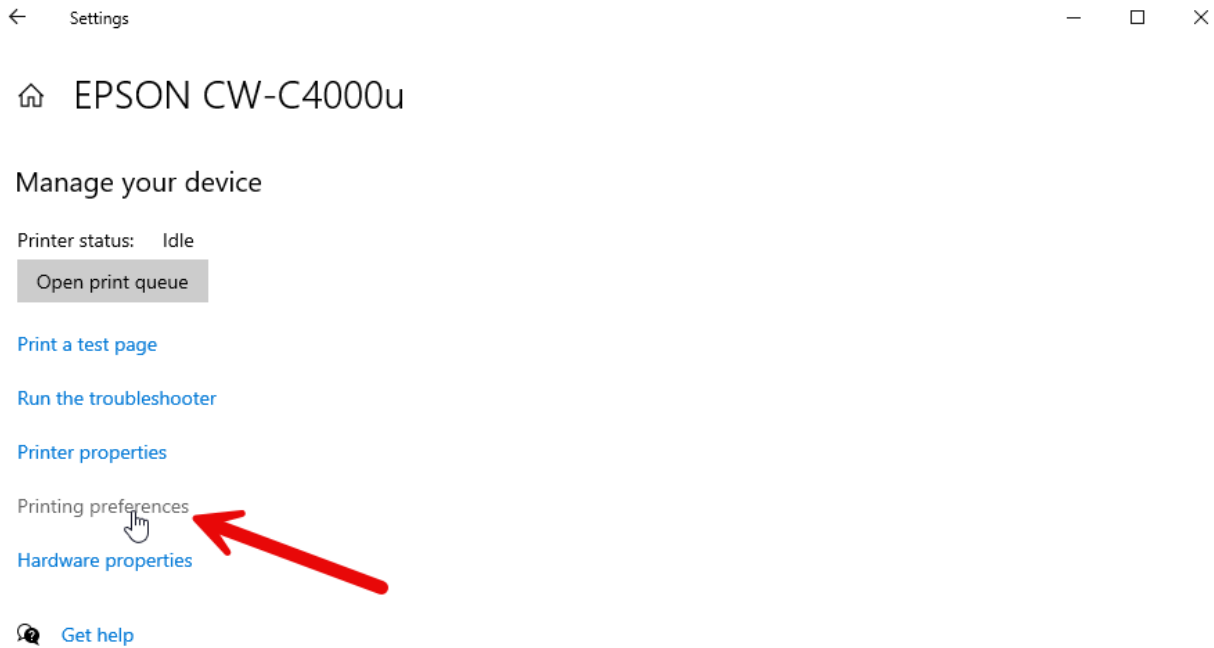
CHICAGO | LOS ANGELES | NEW YORK | WASHINGTON DC

**CLICK TO DOWNLOAD OUR CATALOG TODAY**





Click on "Printing preferences" on the next window.



CHICAGO | LOS ANGELES | NEW YORK | WASHINGTON DC

**CLICK TO DOWNLOAD OUR CATALOG TODAY**

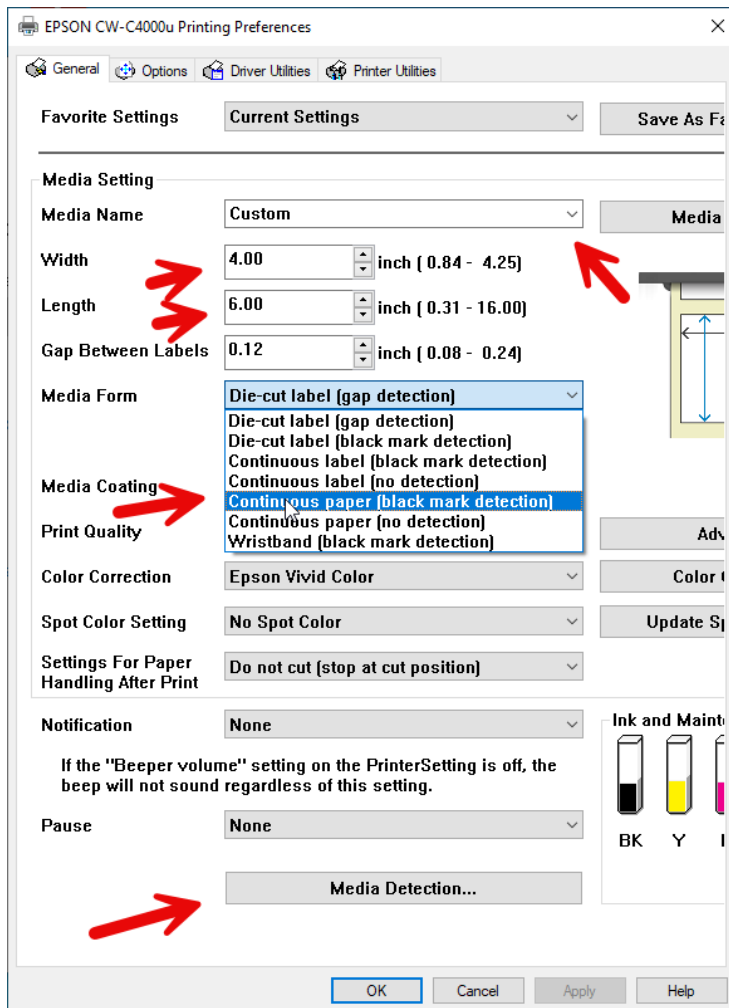


Select "Custom" from the Media Name Drop Down

- Change the Width and Length to your badge size
- Change the Media coating to "black mark detection" - most common used badge detection type.
- Select Media Detection

*In this example we are using 4x6 blank card stock with black mark detection. If you are not sure what badge size or badge type you have please contact your HTR representative or leave your name, email or number on our form*

<https://hartfordrents.com/support/>

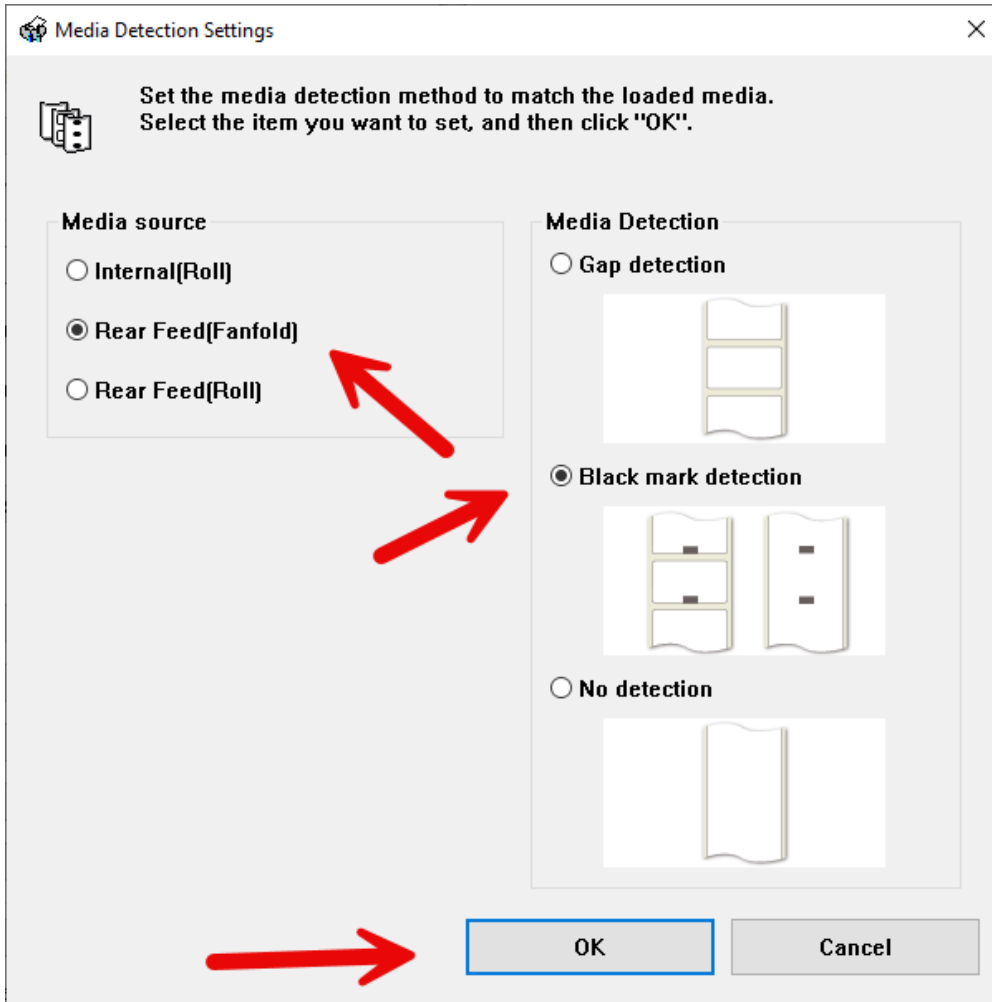


CHICAGO | LOS ANGELES | NEW YORK | WASHINGTON DC

**CLICK TO DOWNLOAD OUR CATALOG TODAY**



Select Rear Feed (Fanfold) and Black mark detection from the Media Detection Settings screen and click "OK"

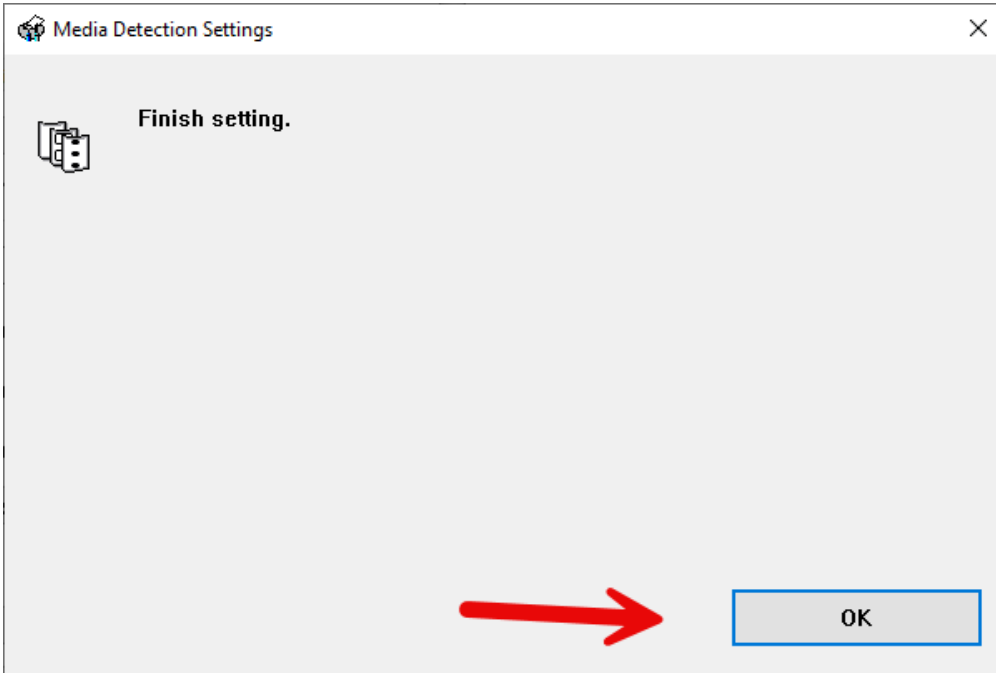


CHICAGO | LOS ANGELES | NEW YORK | WASHINGTON DC

**CLICK TO DOWNLOAD OUR CATALOG TODAY**



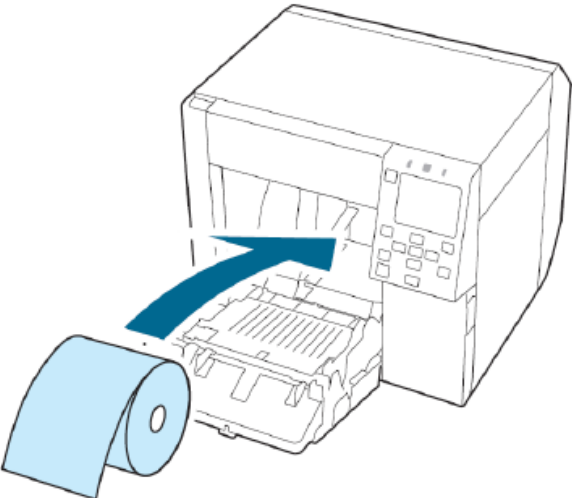
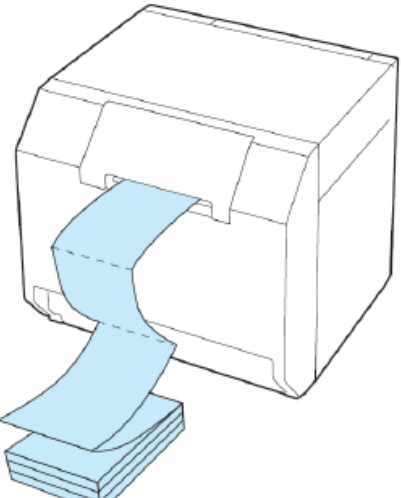
Click ok again to Finish the setting



CHICAGO | LOS ANGELES | NEW YORK | WASHINGTON DC

**CLICK TO DOWNLOAD OUR CATALOG TODAY**

With the Epson C4000 it is critical setup the printer panel with the correct Media Detect, Source and form before installing any label media in the printer to prevent potential errors.

Supply from Inside (Internal)	Supply from Outside (Rear Feed)
<p>Paper is supplied from inside the printer. Set roll paper into the printer.</p>  A line drawing of the Epson C4000 printer with its front cover open. A blue arrow points from a roll of paper on the left into the printer's internal paper tray. The printer's control panel is visible on the right side.	<p>Paper is supplied from outside the printer. Place roll paper or fanfold paper behind the printer.</p>  A line drawing of the Epson C4000 printer. A blue sheet of paper is shown being fed into the back of the printer. A stack of printed sheets is shown coming out of the front output tray.

CHICAGO | LOS ANGELES | NEW YORK | WASHINGTON DC

**CLICK TO DOWNLOAD OUR CATALOG TODAY**