



Epson C3500 Printer Network Setup

Click on the Epson Device Admin (EDA) Icon on your desktop – If you can't locate it, click on the "Windows" key on your keyboard and search for "Epson Device Admin"



If not already installed: Download the "Epson Device Admin" from our support page <https://hartfordrents.com/support/>

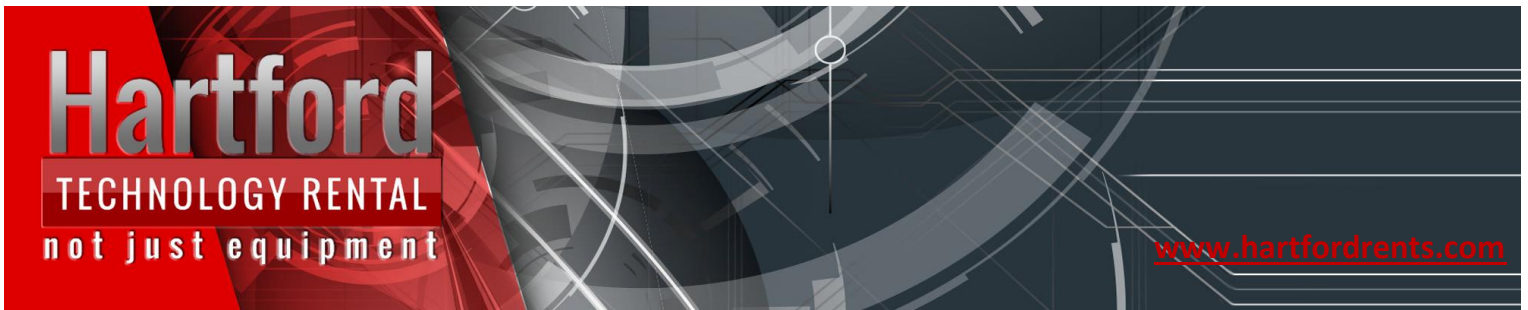
Run the installation, follow the prompts, accept all defaults and install.

Wired installation: (Network)

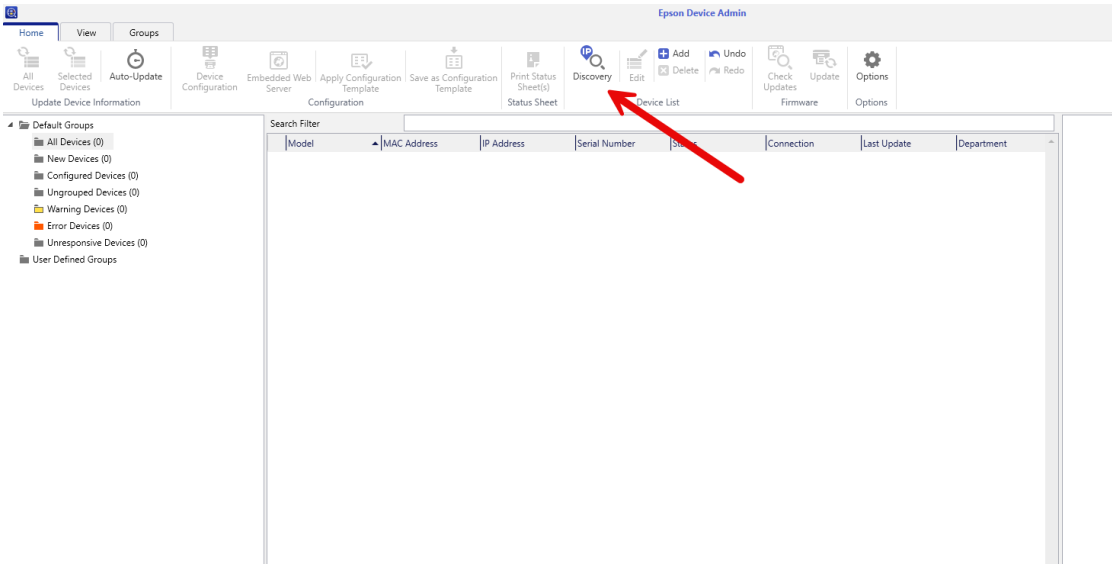
- Prior to beginning configuration, confirm your printer is hardwired /connected to the same network your laptop is on.

CHICAGO | LOS ANGELES | NEW YORK | WASHINGTON DC

CLICK TO DOWNLOAD OUR CATALOG TODAY



Launch the Epson Device Admin tool and click on "discovery"



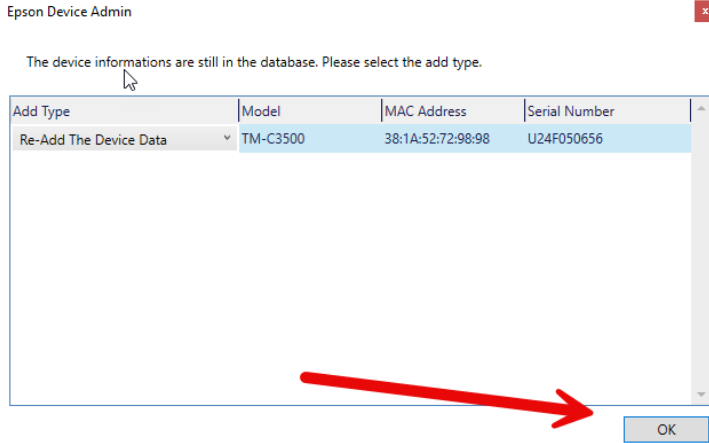
This will begin the discovery phase (bottom right-hand corner)



CHICAGO | LOS ANGELES | NEW YORK | WASHINGTON DC

CLICK TO DOWNLOAD OUR CATALOG TODAY

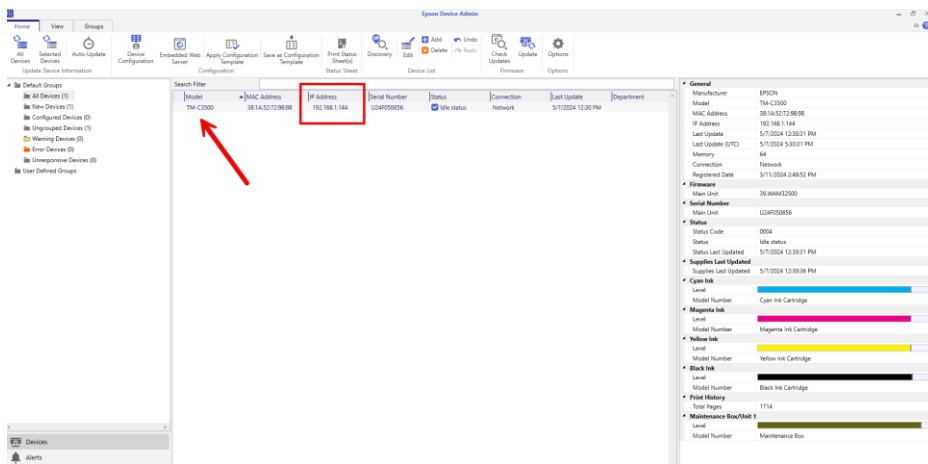
If prompted, click ok on "Re-Add the Device Data"



Your printer will now appear in the window

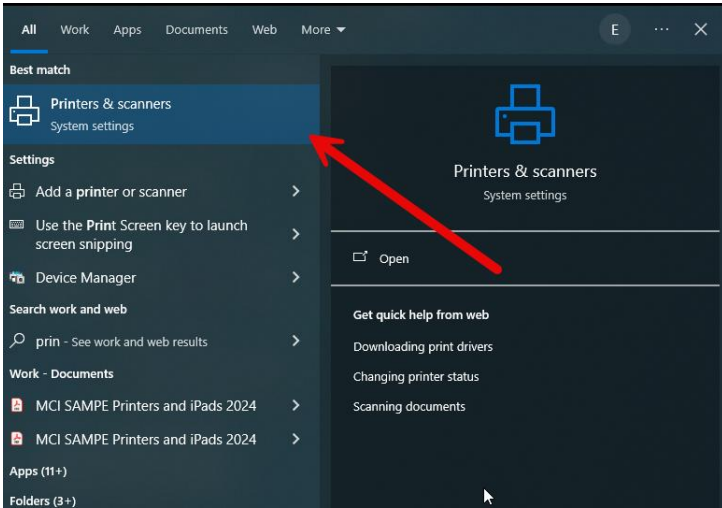
Please write down the IP address that was assigned to your printer

Example: 192.168.1.144

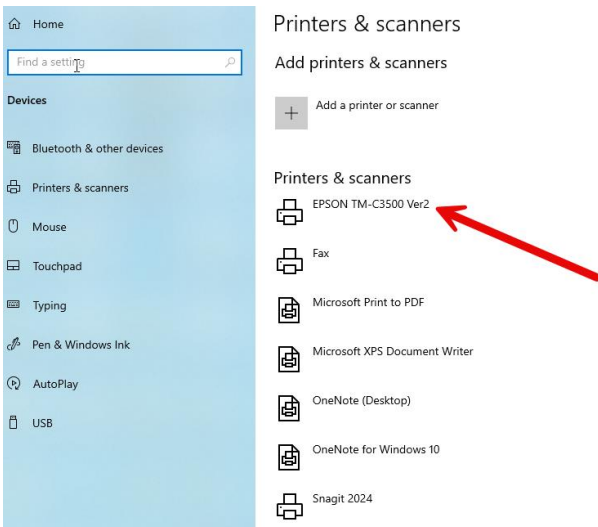




Navigate to the Windows “Printer & scanners” System settings. You can search by clicking on the “Windows” key on your keyboard and typing in “printers” and launch.

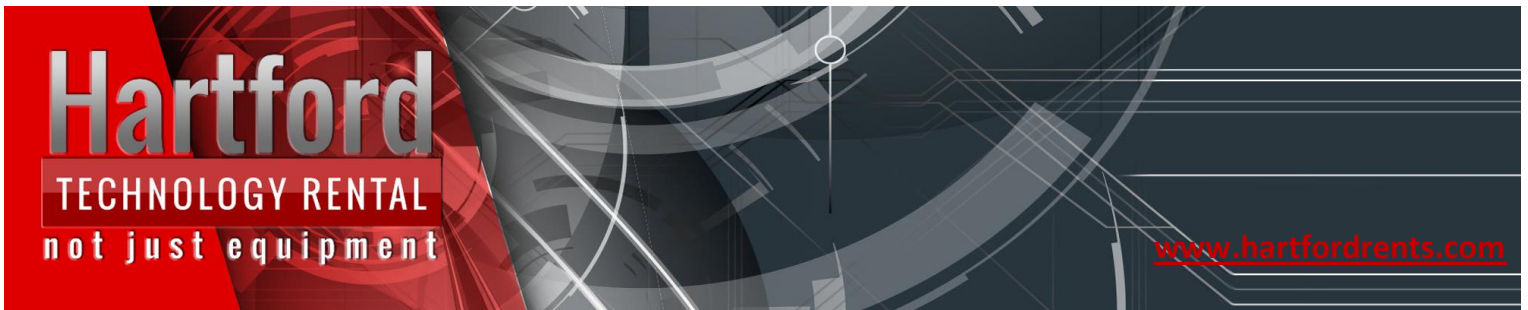


Your printer should now be installed

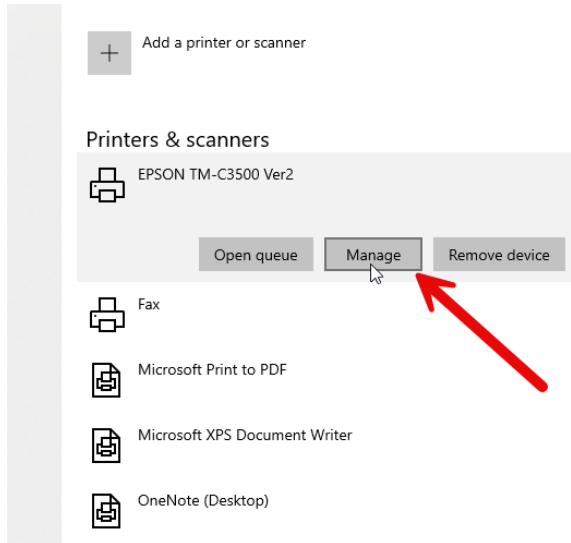


CHICAGO | LOS ANGELES | NEW YORK | WASHINGTON DC

CLICK TO DOWNLOAD OUR CATALOG TODAY



Hover over your printer and click on "Manage"



Click on "Printer Properties" on the next window.

🏠 EPSON TM-C3500 Ver2

Manage your device

Printer status: Idle

Open print queue

[Print a test page](#)

[Run the troubleshooter](#)

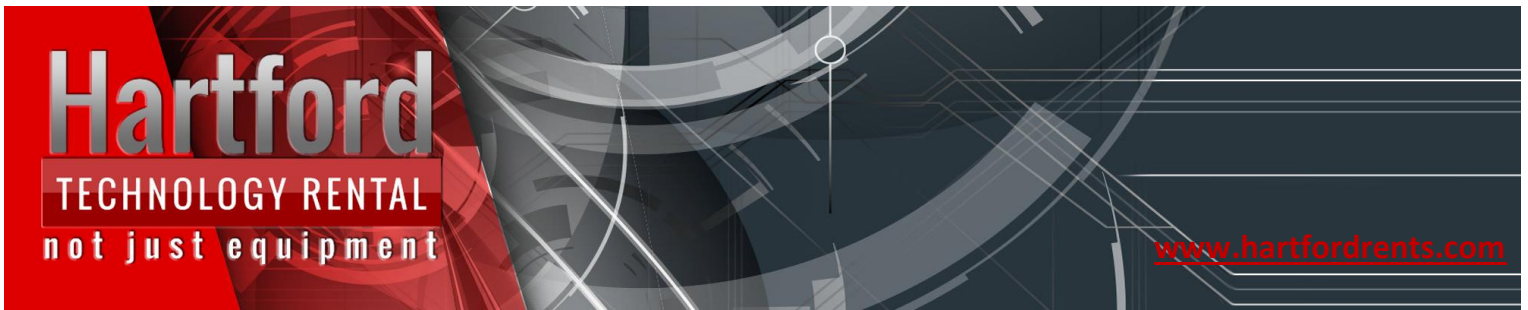
[Printer properties](#)

[Printing preferences](#)

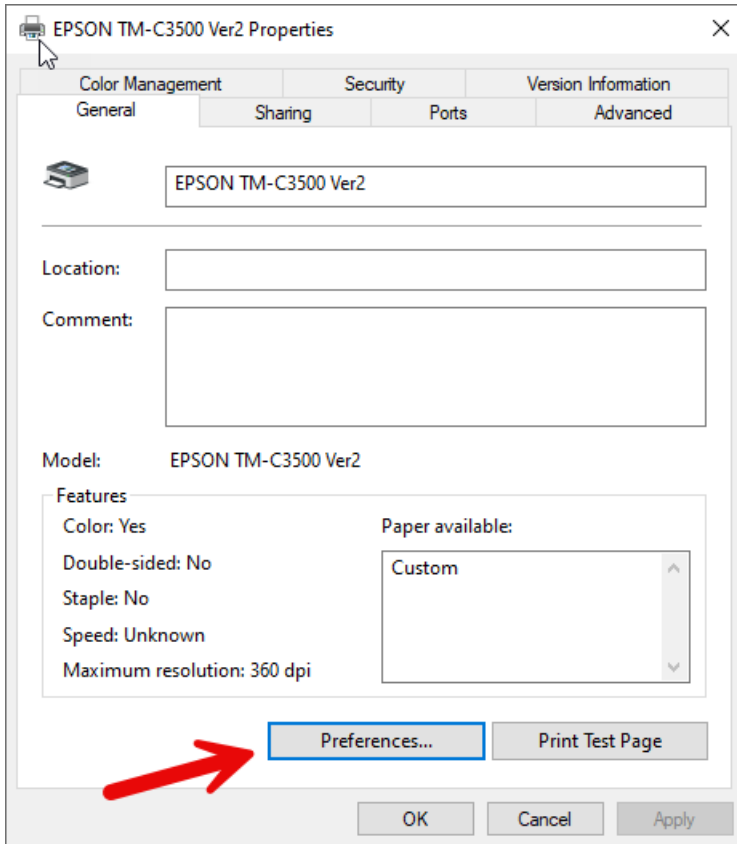
[Hardware properties](#)

CHICAGO | LOS ANGELES | NEW YORK | WASHINGTON DC

CLICK TO DOWNLOAD OUR CATALOG TODAY



Once in “printer properties” click on “Preferences”

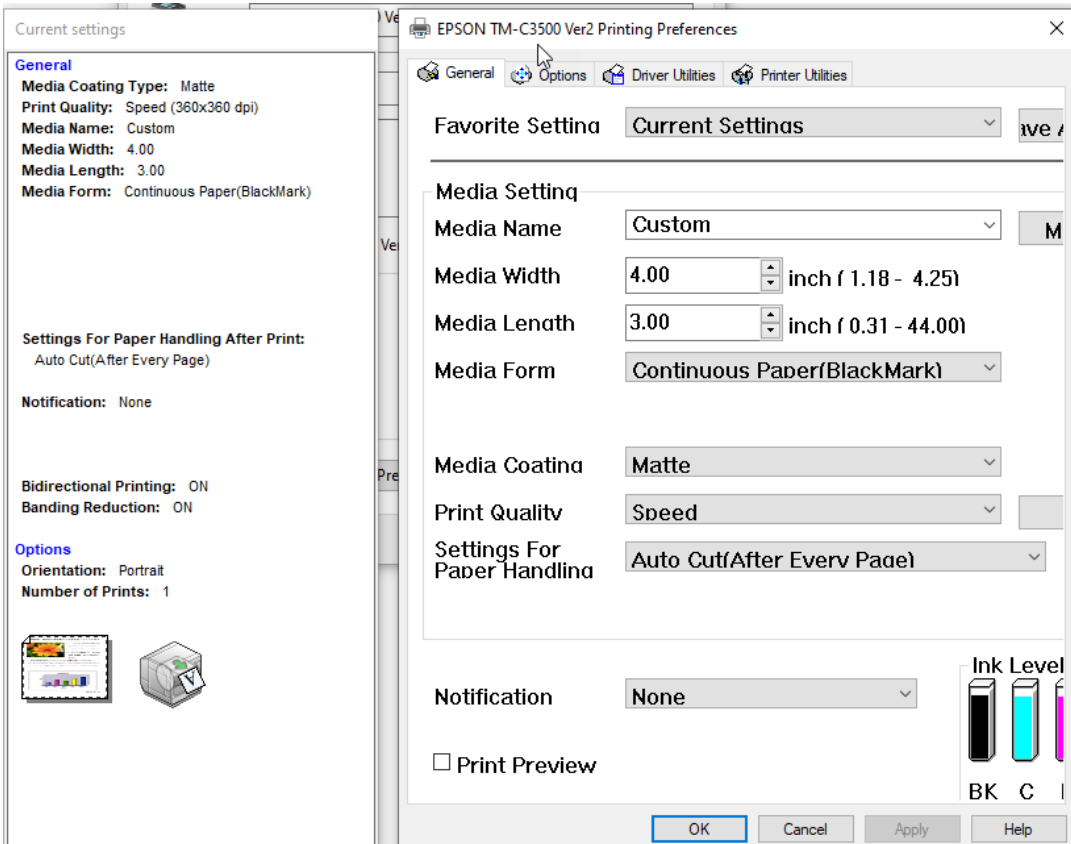


CHICAGO | LOS ANGELES | NEW YORK | WASHINGTON DC

CLICK TO DOWNLOAD OUR CATALOG TODAY

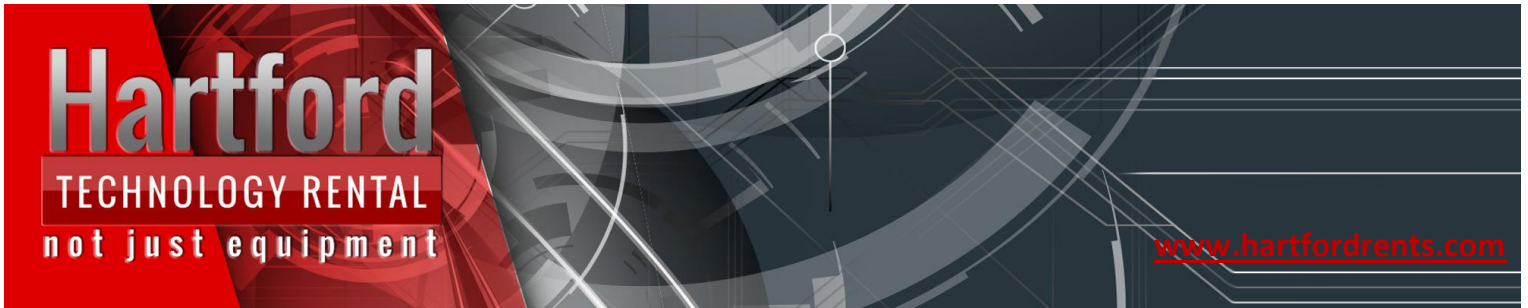


This will bring up the “Epson Printing Preference” screen:

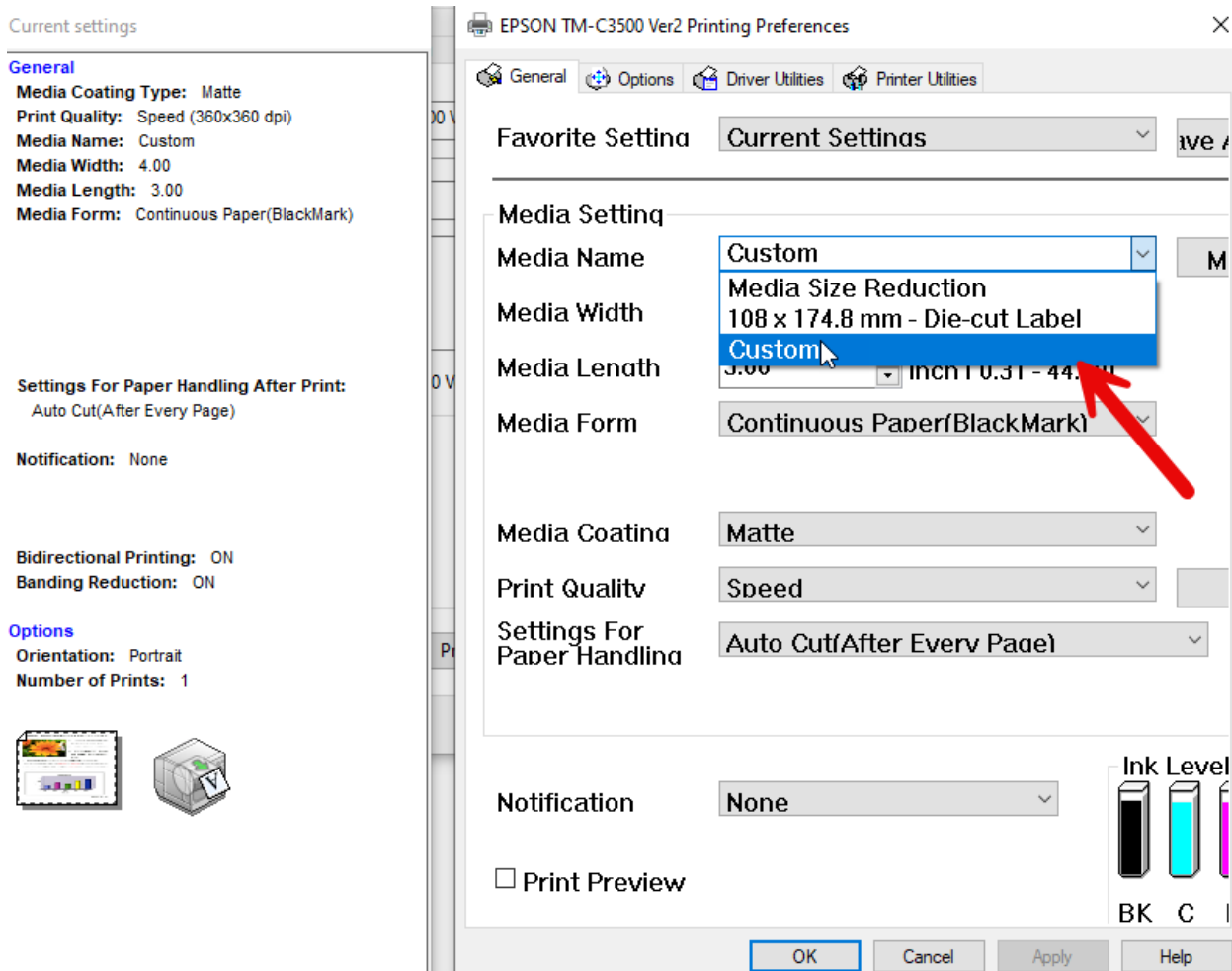


CHICAGO | LOS ANGELES | NEW YORK | WASHINGTON DC

CLICK TO DOWNLOAD OUR CATALOG TODAY

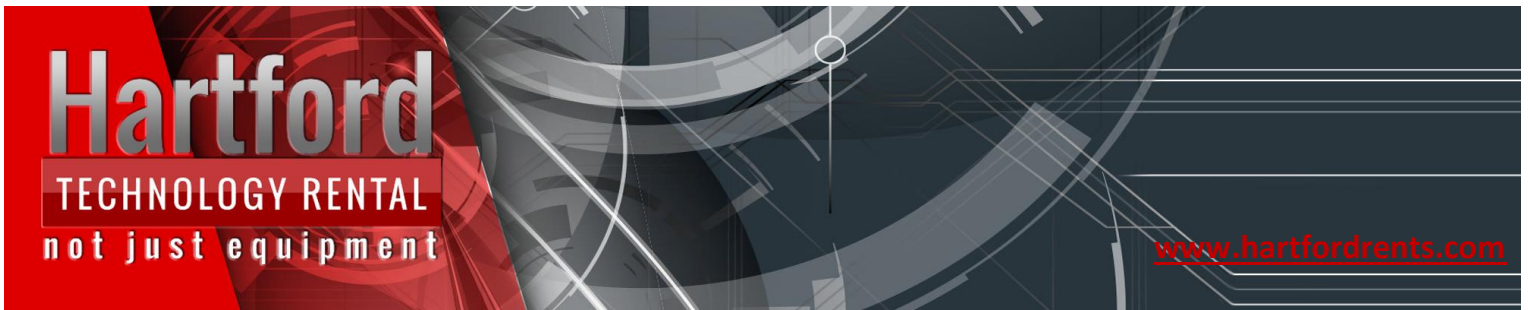


From the "Media name" drop select "custom"



CHICAGO | LOS ANGELES | NEW YORK | WASHINGTON DC

CLICK TO DOWNLOAD OUR CATALOG TODAY



Configuring the printer settings and paper size

NOTE:

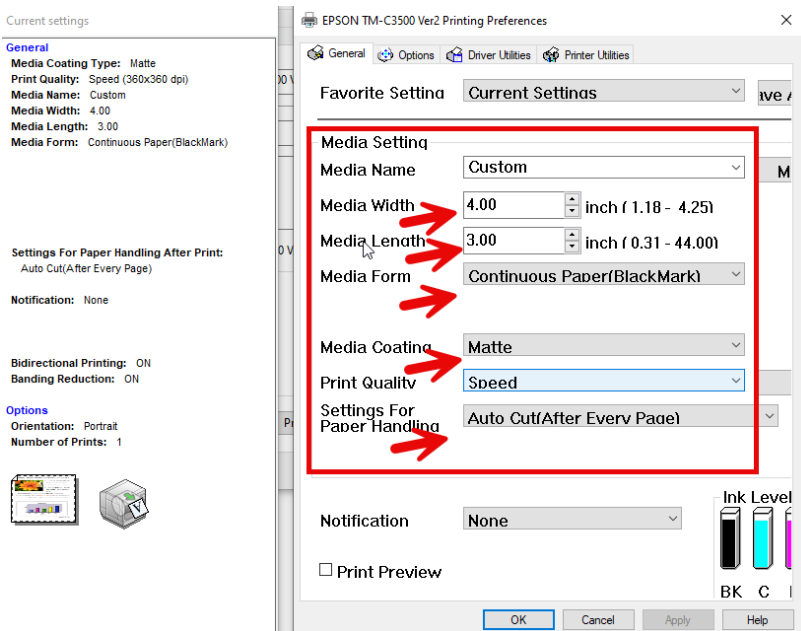
These settings may change based on your badge size and type. If you are not sure about this setting, please contact your HTR representative:

Example of badge stock



The example below are settings for a 4x3 badge with a black mark, matte and an auto cutter installed

After you've made your change(s) click "Ok"

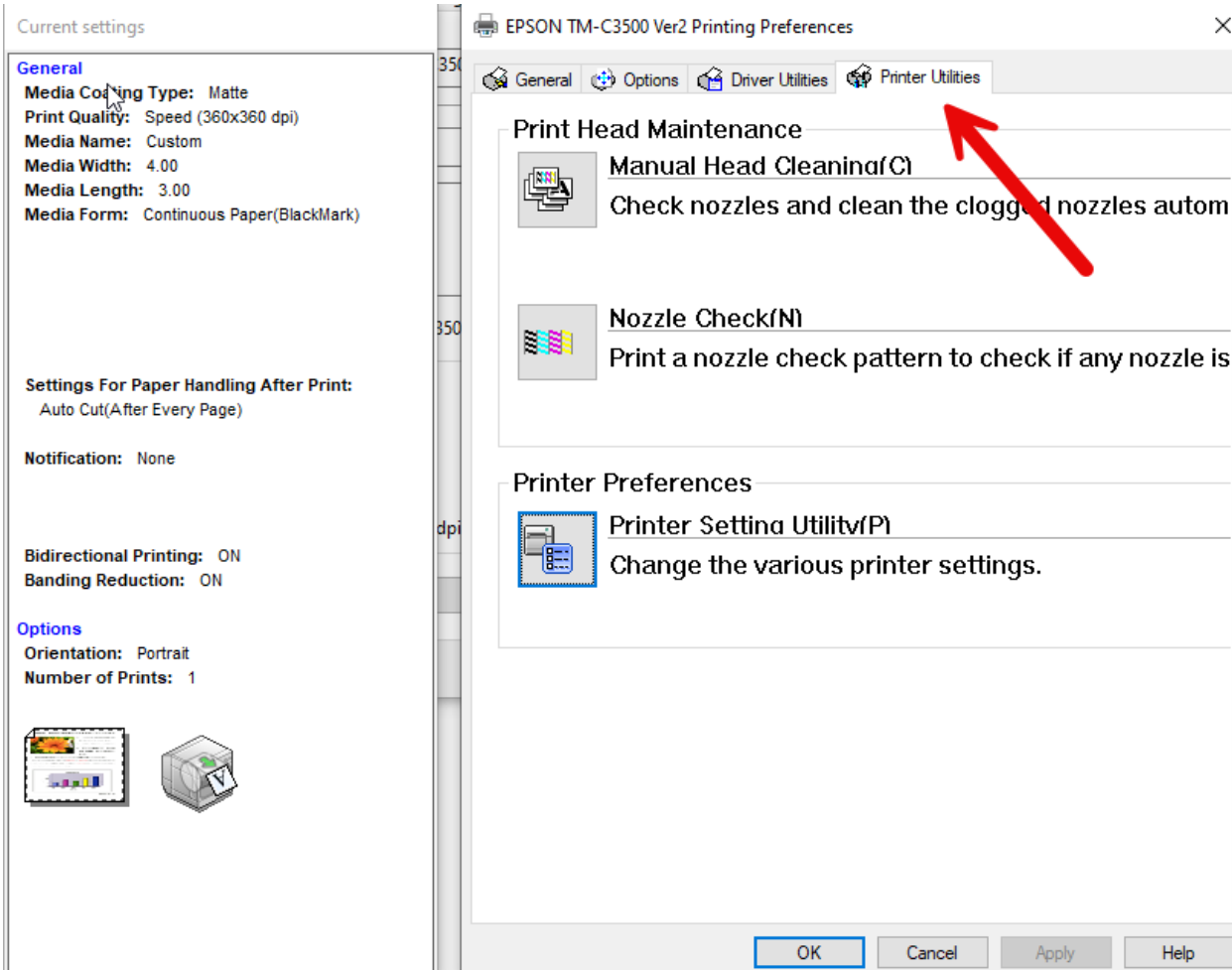


CHICAGO | LOS ANGELES | NEW YORK | WASHINGTON DC

CLICK TO DOWNLOAD OUR CATALOG TODAY

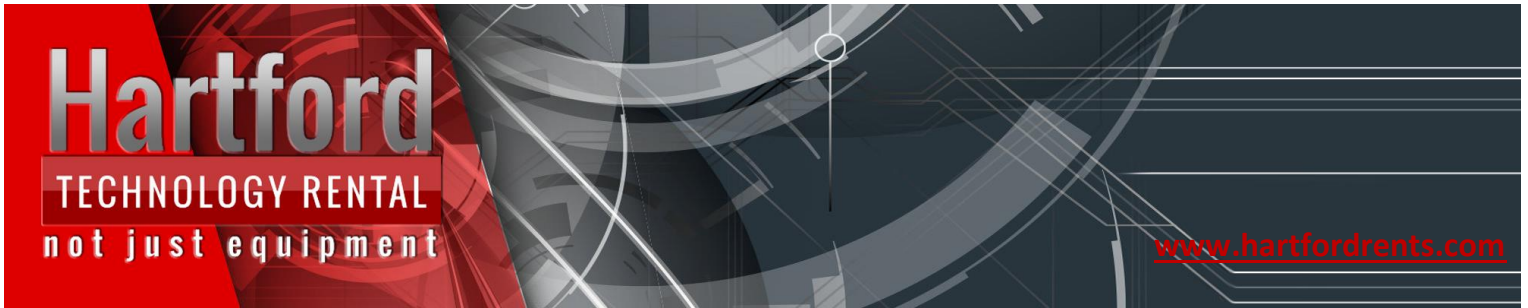


After clicking "OK" select the "Printer Utilities" tab

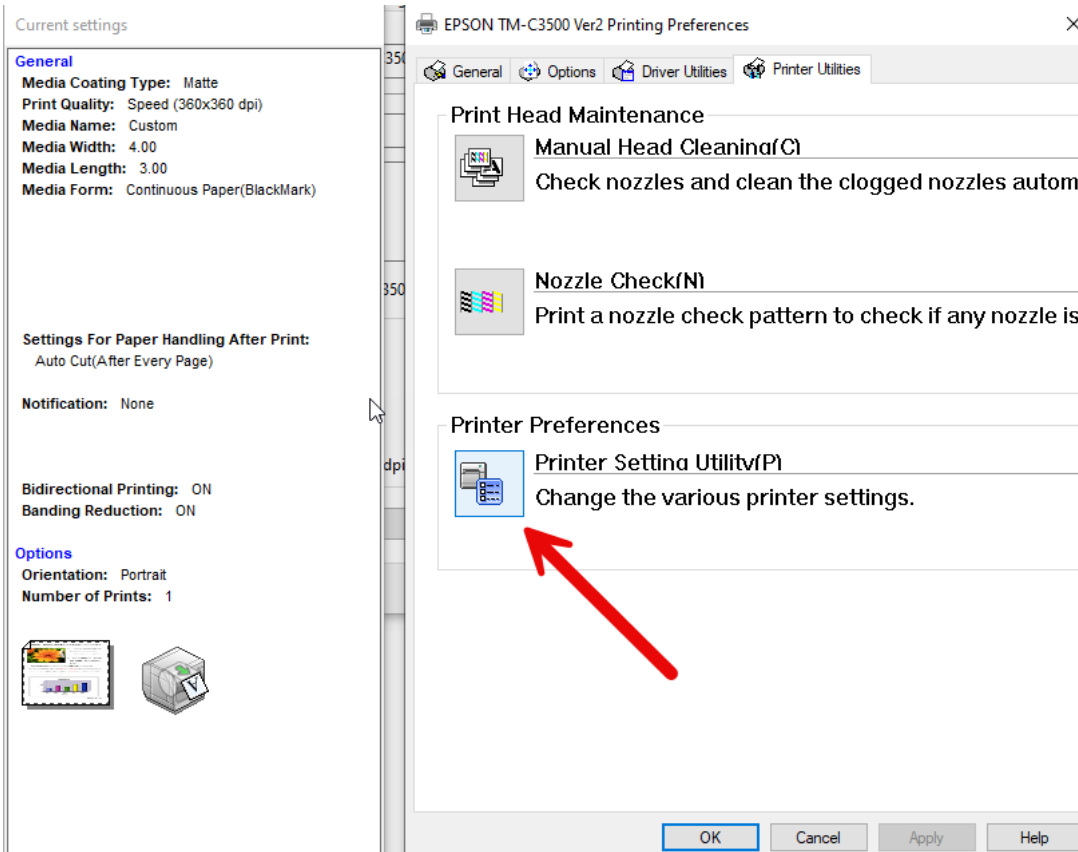


CHICAGO | LOS ANGELES | NEW YORK | WASHINGTON DC

CLICK TO DOWNLOAD OUR CATALOG TODAY

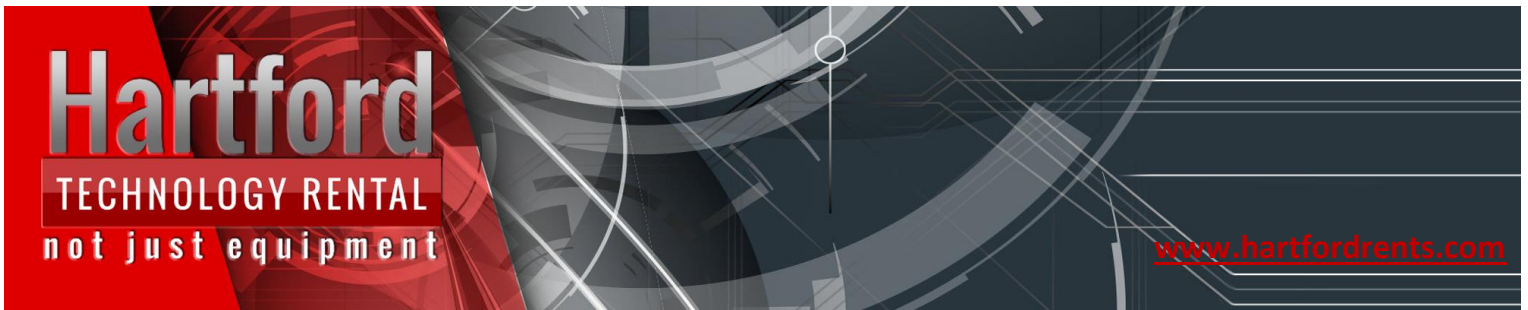


Click "Printer Setting Utility"



CHICAGO | LOS ANGELES | NEW YORK | WASHINGTON DC

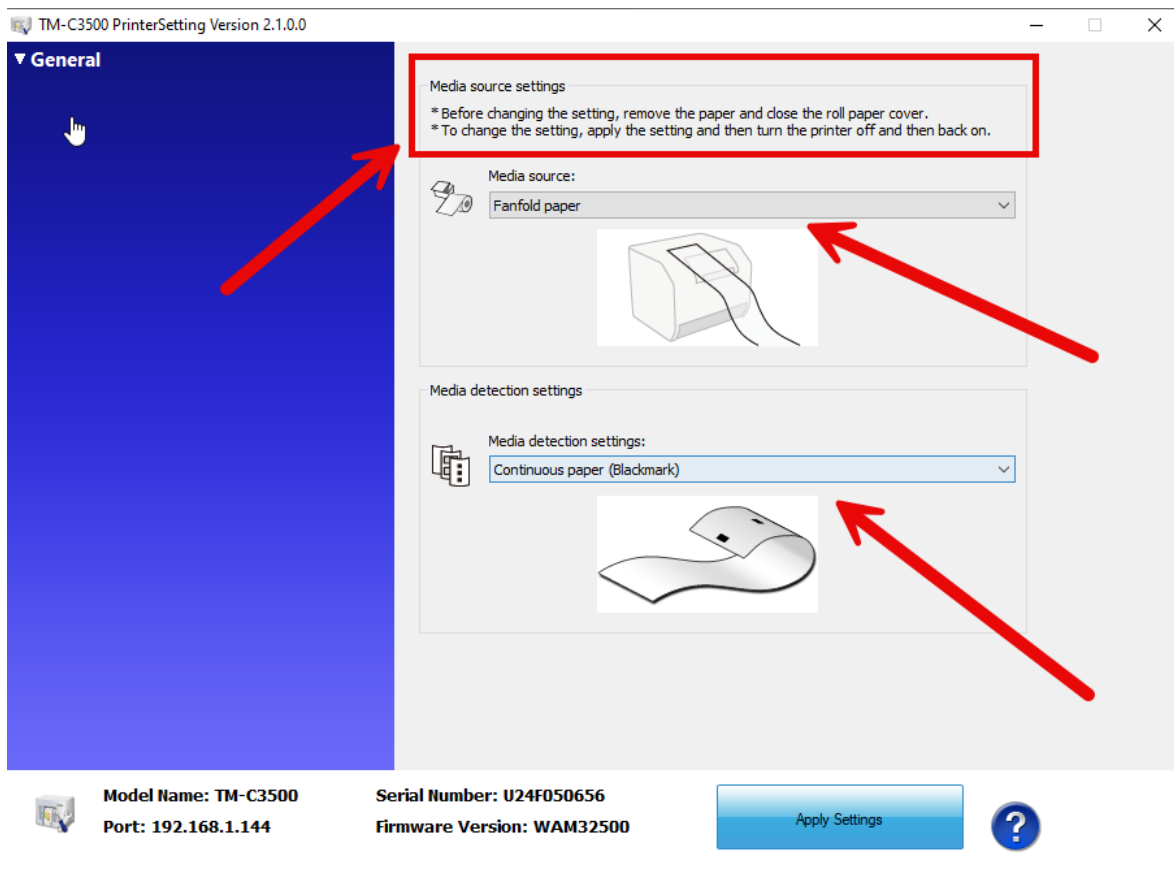
CLICK TO DOWNLOAD OUR CATALOG TODAY



Once launched ensure your paper settings are set properly.

Note the top message:

- Before changing this setting, remove the paper and close the roll paper cover.
- To change the setting, click apply setting (at the bottom), then turn the printer off and then back on.

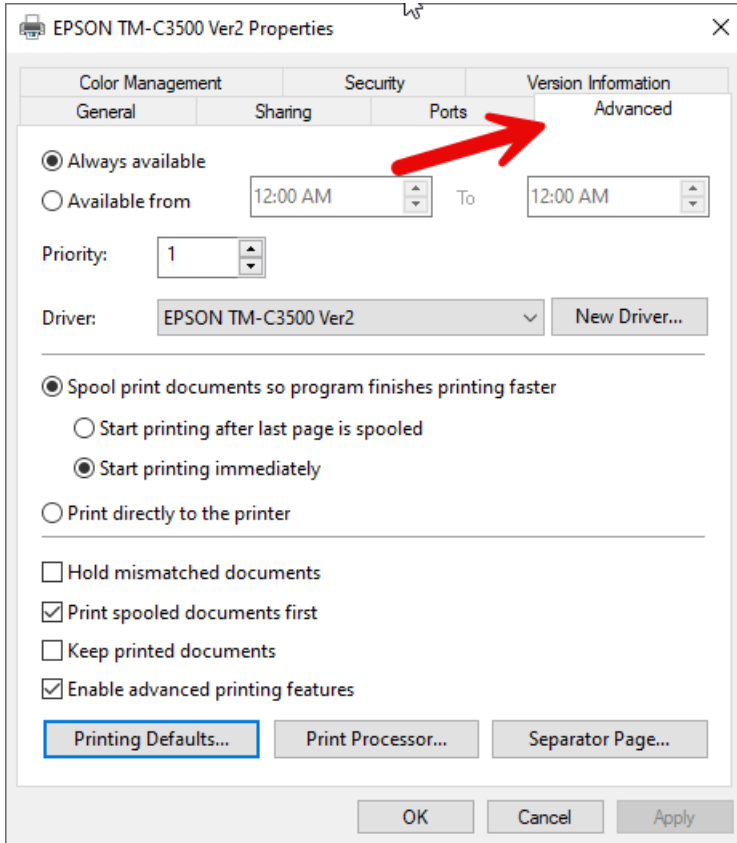


CHICAGO | LOS ANGELES | NEW YORK | WASHINGTON DC

CLICK TO DOWNLOAD OUR CATALOG TODAY



To confirm your settings were saved navigate to the “Advanced tab”:

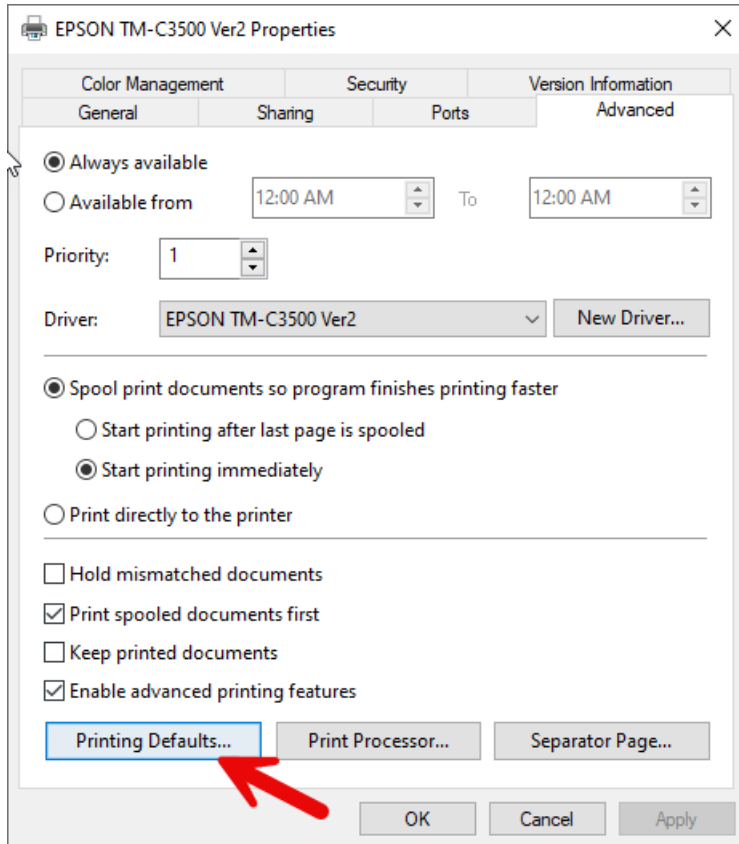


CHICAGO | LOS ANGELES | NEW YORK | WASHINGTON DC

CLICK TO DOWNLOAD OUR CATALOG TODAY



Click on "Printing defaults"

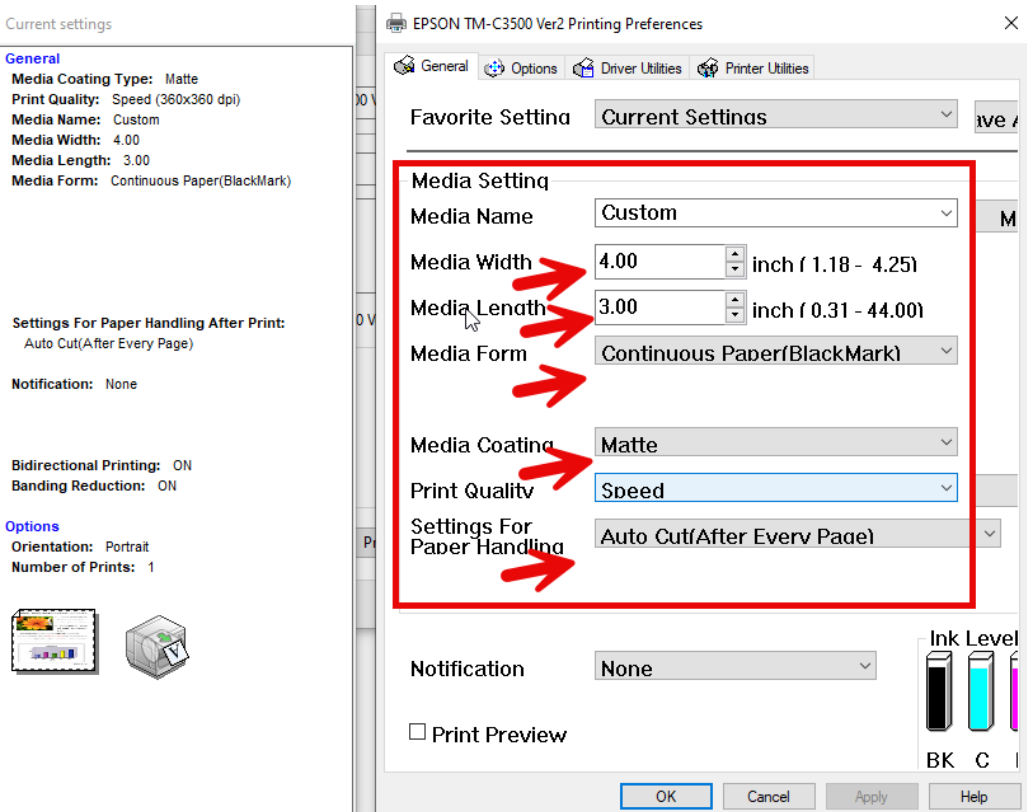


CHICAGO | LOS ANGELES | NEW YORK | WASHINGTON DC

CLICK TO DOWNLOAD OUR CATALOG TODAY

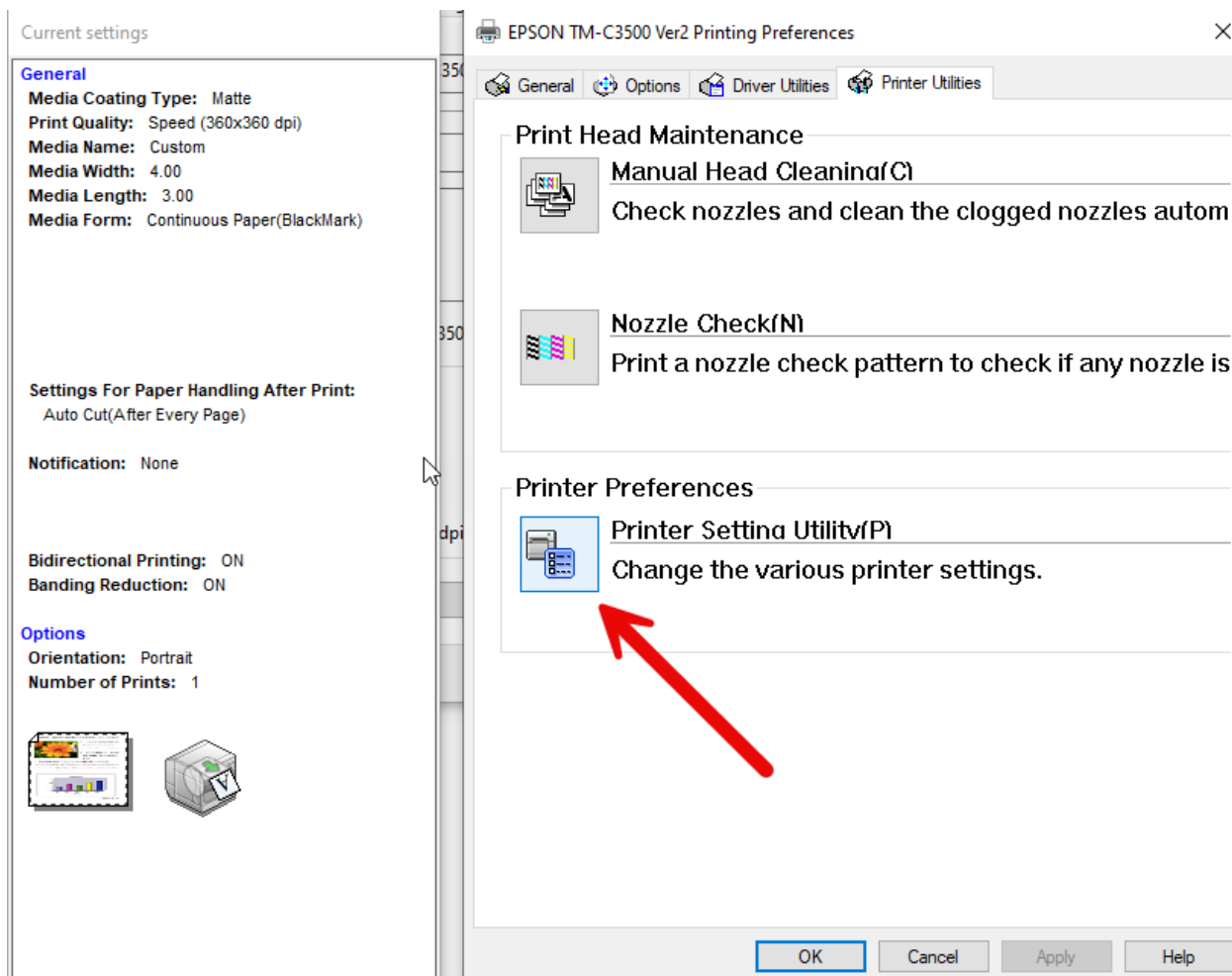


Verify the settings are correct:



CHICAGO | LOS ANGELES | NEW YORK | WASHINGTON DC

CLICK TO DOWNLOAD OUR CATALOG TODAY



TM-C3500 PrinterSetting Version 2.1.0.0

▼ General

Media source settings

* Before changing the setting, remove the paper and close the roll paper cover.
* To change the setting, apply the setting and then turn the printer off and then back on.

Media source:
Fanfold paper

Media detection settings

Media detection settings:
Continuous paper (Blackmark)

Model Name: TM-C3500 Serial Number: U24F050656
Port: 192.168.1.144 Firmware Version: WAM32500

Apply Settings

CHICAGO | LOS ANGELES | NEW YORK | WASHINGTON DC

CLICK TO DOWNLOAD OUR CATALOG TODAY